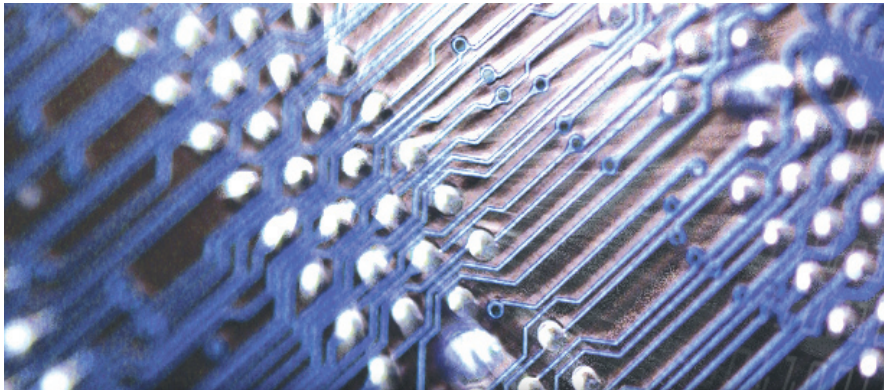


# GC-PowerPlace™

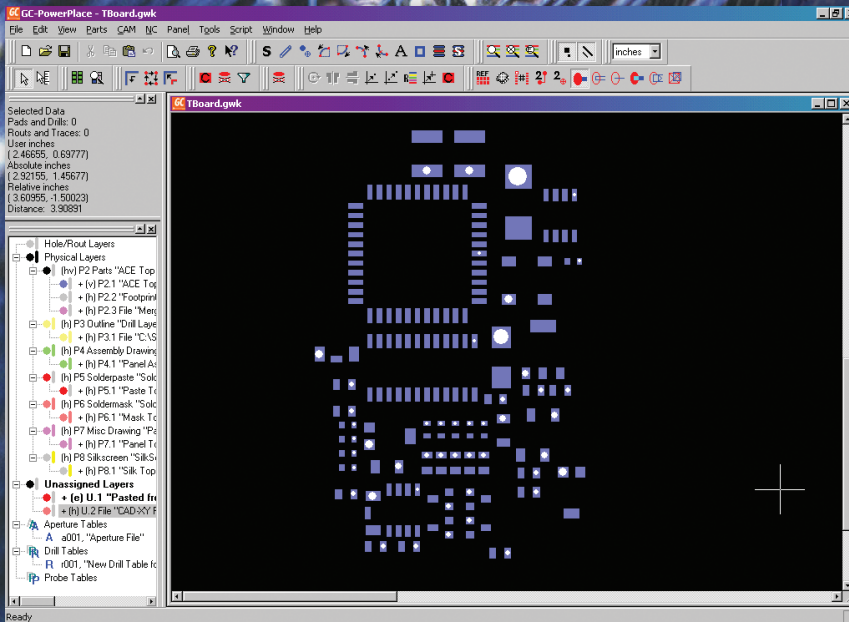
## SPI OFFLINE PROGRAMMING SOFTWARE



It's easy to create programs for the solder paste inspection systems using the industry's leading Gerber-based data preparation software, GC-PowerPlace™ from GraphiCode™. With a custom-designed file output script, GC-PowerPlace increases the productivity of your inspection programming staff.

### KEY FEATURES

- Utilizes industry-standard Gerber data input for off-line programming.
- Creates precise descriptions of the pads and components to be inspected from data representing the board.
- Groups pads automatically into components and associates reference designators with these components.
- Improves and simplifies data preparation by using CAD X-Y data or bill-of-material files.
- Provides Gerber input and data manipulation that many high level CIM systems lack.



### CREATE SOLDER PASTE INSPECTION PROGRAMS IN MINUTES

Creating programs off-line for the solder paste inspection systems is fast and easy with GC-PowerPlace using readily-available data: Gerber, CAD X-Y and bill-of-materials files.

With GC-PowerPlace, users no longer have to manually draw or edit graphics overlaid on an image of the PCB. Using stencil and silkscreen layer Gerber files, GC-PowerPlace reverse-engineers a PCB and creates a list of the components and pads on the board. CAD X-Y

data files can also be used to simplify the process of associating reference designators with components and assigning vendor part numbers, ultimately making it easier to interpret inspection data. If part numbers are not available in the CAD X-Y data, bill-of-materials files can be used.

The GC-PowerPlace programming process generates an output file that is used by the SPI systems for set up of inspection-specific parameters. The entire process of going from Gerber, CAD X-Y data and BOM data files to an inspection program is vastly simplified and takes less than an hour on a typical 8x10 inch panel with 2000-3000 pads.

### SUPPORT AND TRAINING

CyberOptics offers GC-PowerPlace software with the solder paste inspection systems as a total, integrated customer solution. Timely and technically-accurate support and training are available. Included are:

- One day on-site software installation and training.
- Customer support via toll-free 800 phone number or email. If the toll-free phone number is not valid in your area, please contact CyberOptics' regional support office.

**CYBEROPTICS®**

## IMPORT FILE FORMATS

- RS-274-X (Gerber-X)
- RS-274-D (Gerber-D)
- Assembly drawings
- Bill of Materials
- CAD X-Y/Centroid (ASCII data)

### SYSTEM REQUIREMENTS

Operating System	Windows XP®, NT (v4.x), 2000, 98; Windows NT or Windows 2000 preferred
Processor	400 MHz Pentium® or equivalent preferred
Memory	128 MB RAM minimum; 256 MB preferred
Free Space Required	2+ GB hard disk with 90 megabytes available space preferred; 13 megabytes minimum
Hardware	CD-ROM drive
Video Card	Windows accelerator video card with 2MB or more video
Extended Memory	DRAM
Monitor	17-inch or larger monitor

#### Americas

CyberOptics Corporation  
Minneapolis, Minnesota USA  
Tel: + 1 763 542 5000

#### Asia Pacific

CyberOptics Singapore  
Singapore  
Tel: + 65 6744 3021

#### China

CyberOptics China Company, Ltd.  
Shanghai  
Tel: + 86 21 6468 8080

#### Europe

CyberOptics Ltd.  
United Kingdom  
Tel: + 44 (0) 1756 700 330

[info@cyberoptics.com](mailto:info@cyberoptics.com)

**CYBEROPTICS®**

[www.cyberoptics.com](http://www.cyberoptics.com)